

GES HOTEL AND TOWER

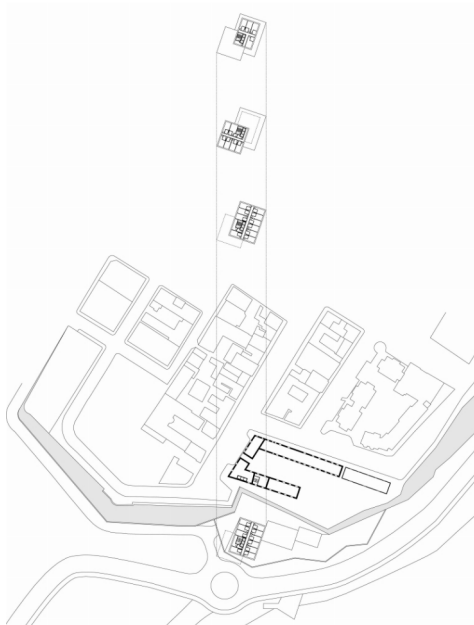
CIDADE DA PRAIA, CAPE VERDE

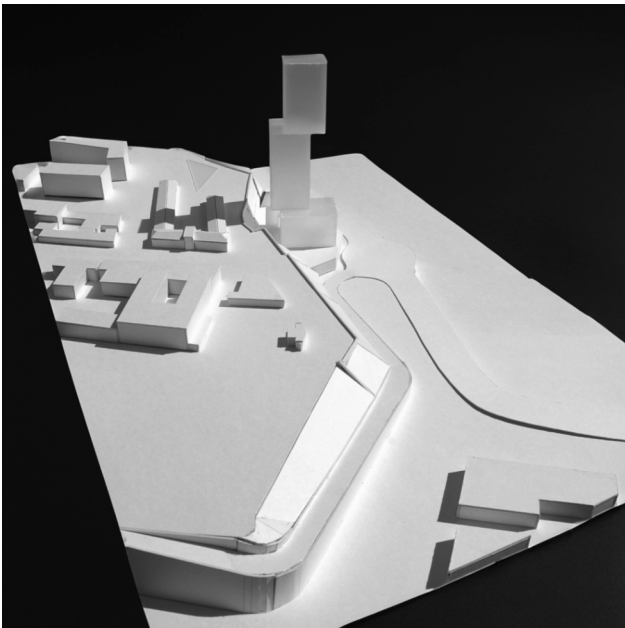
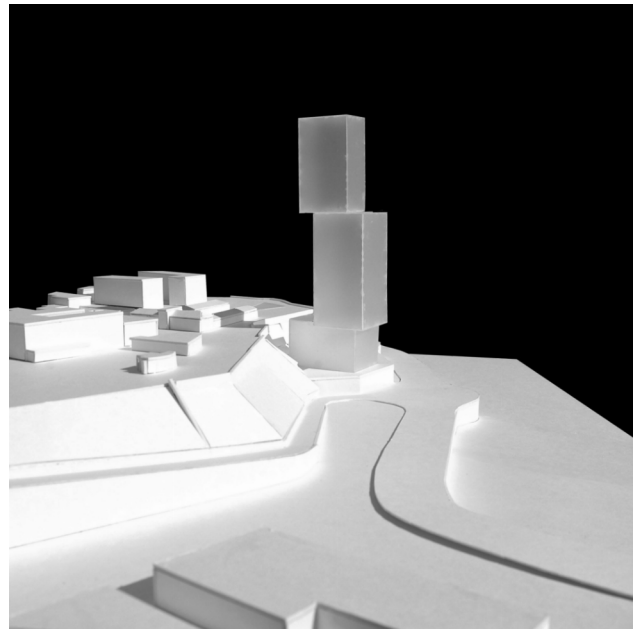
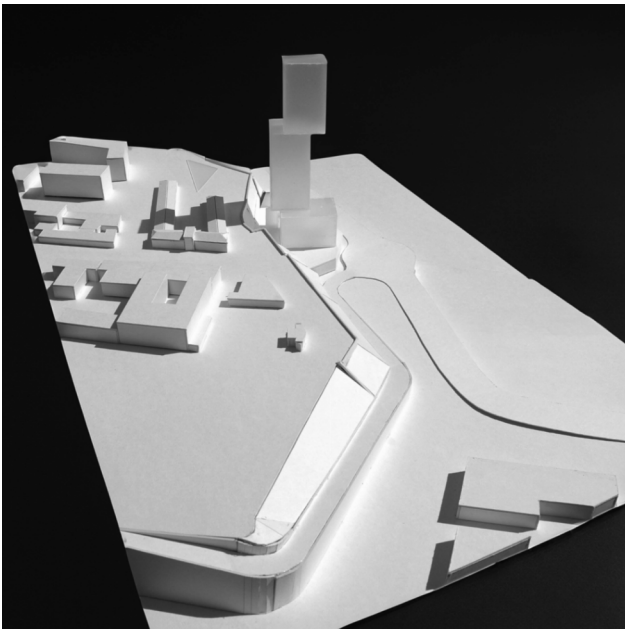
2005

The Republic of Cape Verde is a 10-island archipelago located in the Macaronesia eco-region of the North Atlantic Ocean, off the western coast of Africa. The previously uninhabited islands were discovered and colonized by the Portuguese in the 15th century and attained independence in 1975. Cape Verde is a small nation that lacks resources but is a peaceful and human rights abiding country, which has in consequence received considerable trust and support from countries and international organizations, including the un, the wto, the eu and the usa. Notwithstanding its lack of rain and droughts, Cape Verde has experienced a spectacular growth in tourism investment in the past decade.

Following the opening of the Cape Verde subsidiary of the Espírito Santo Bank, the holding company considered opening a hotel and convention centre through its tourism division. Standing next to the presidential palace (and former Portuguese governor's residence), the 20-storey tower is designed as a light beacon across the Praia harbour. Gracefully located below and detached from the base to the soon-to-be-listed unesco World Heritage Site of the "Plateau", at first glance the tower can be seen as a series of volumes on the verge of collapse, but at closer range the concrete central core gives evidence of its solidity.

The former 18th century Portuguese army fortress of Cidade da Praia standing on the plot's hilltop is to be renovated and converted into a restaurant, business centre and foyer of the hotel. In addition, the master plan provides for the new head office of the Espírito Santo Bank in Cape Verde.





Location: Cidade da Praia (Santiago Island), Cape Verde
Developer: Espírito Santo Group
Operator: Tivoli Hotels/ Espírito Santo Tourism (Europe)
Programme: 120-bdr 5-star hotel tower 250-seater conference centre and spa
Gross floor area: 12,000 sq. m
Estimated investment: EUR 12m
Project: 2005