

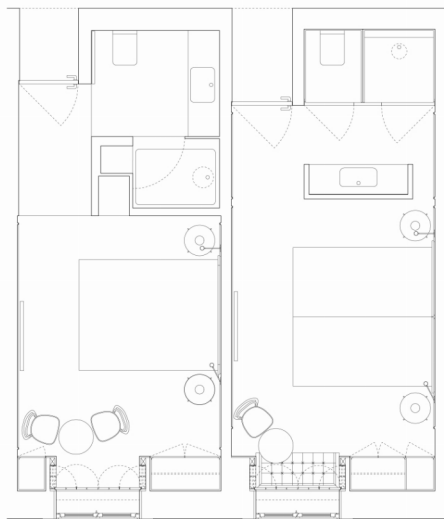
# PROMONTORIO

LUX PESSOA HOTEL  
LISBON, PORTUGAL  
2016–2013

A storytelling boutique hotel  
in old Lisbon inspired in the life  
of the poet Fernando Pessoa

Located in the core of Lisbon's historical district, next to the renown Largo do Carmo, on the hill that connects the Chiado and Rossio districts, this hotel is the refurbishment of an existing building with magnificent views towards the castle and the river. In accordance with the client's brief, the interior design is loosely inspired in the life and work of Portuguese poet Fernando Pessoa. The extensive use of Estremoz marble on the flooring is made with a non-conventional herringbone layout in many public areas. In some cases, such as in the lobby, it is associated with off-white mouldings and panelled vaulted ceilings. In others, such as in the library, this whiteness extends to lacquer and glass display cabinets. The Spa returns us to herringbone marble, which here extend from the floors to the walls, creating an intimate hammam-like atmosphere. The guestrooms and suites have microcement floors in sand tones with off-white plastered wall mouldings and traditional timber board ceilings.

These neutral tones contrast with the large bronze mirror surfaces and the marble freestanding washbasin cabinet. Overlooking the valley and the castle on the opposite hill, the rooftop restaurant has its bar counters in limestone with its main feature being a concrete slanted ceiling with mansard coves which forms a sequence of dining areas for groups. The latter have wide aged oak planks in wainscots and partitions that alternate with the upholstered banquette niches. A larger dining cove includes a fireplace with gun barrel steel finishing framed by wall planks. The whole floor is in smooth beige terrazzo and open to an outdoor terrace fully clad in limestone and shaded by a pinewood canopy. The design process included creating an extensive number of custom-made items, from furniture to light fittings, some of which subtly evoke the poet's era and his compelling heteronyms.



Location: Rua da Oliveira ao Carmo 8, Lisbon, Portugal

Client and Operator: Lux Hotels

Brand: Art & Soul Group

Type: Urban

Scope of Services: Architecture and interior design

Project Brief: 4-star boutique hotel with 75 guestrooms, Spa and conference facility

Plot Size: 715 sq. m

Gross Built Area 3,707 sq. m plus 2,145 sq. m underground parking

Project Status: 2013 (concept design) – 2016 (completed)