

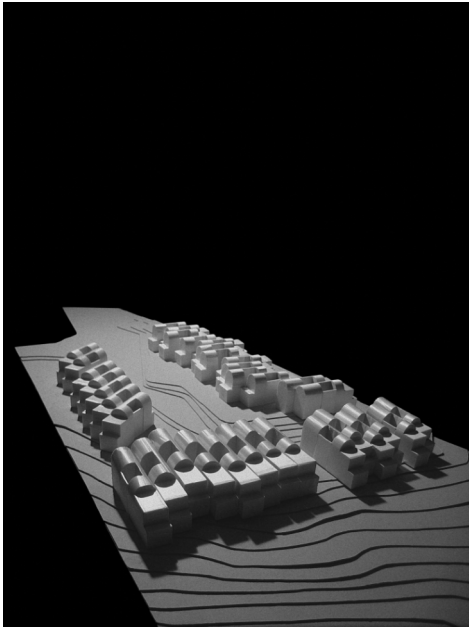
PALMARES GOLF TOWNHOUSES
LAGOS, PORTUGAL
2008

Golfers say it is the crown jewel of the Algarve. Located near the historic city of Lagos, commanding magnificent views of the bay and the distant Monchique hills, Palmares is one of the most beautiful golf courses to be found anywhere. The miles of white sands and dunes of Meia Praia, the majestic Atlantic and the rolling hills provide a unique backdrop for this spectacular course, which opened in 1975.

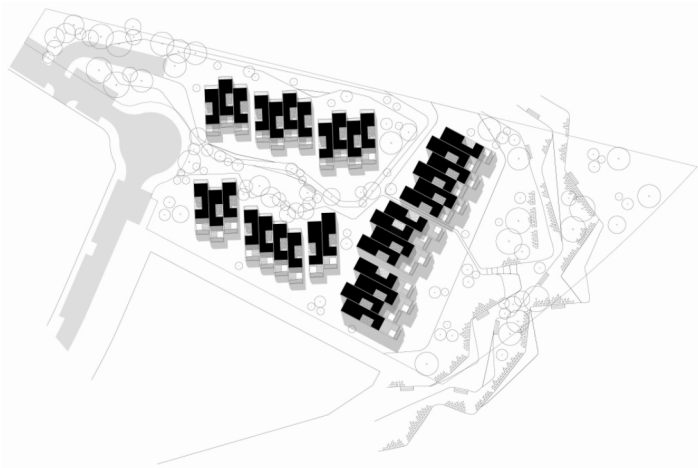
Designed by the legendary golf architect Frank Pennink, and enlarged by Robert Trent Jones, Jr., Palmares runs along gently undulating valleys bordered by pine, almond and fig trees, with a panorama of 25 km of the Atlantic coastline. During the spring the fairways and hills are covered with flowering shrubs. The blossom from the almond trees, which line the vibrant green fairways, give the impression of snow covered trees beneath the warm sun.

It is in this unique context that promontorio won the competition for the design of the first properties to go up under the new masterplan. The 34 semi-detached townhouses have been placed in a widening U-shaped trapezoid to make the most of the golf and ocean views. The car-free cluster forms an informal and densely landscaped piazza with pine trees (*Pinus pinea*) providing refreshing shade from the sun.

Following the success of The Terraces at Pine Cliffs, these two-storey units have also been conceived as patio houses, with interior courtyards. These maximize the spatial fluidity and increase natural cross-ventilation thereby reducing the need for mechanical cooling. The rooftops have been transformed into a place of relaxation and pleasure with jacuzzis and a kitchenette so that light meals can be prepared and the dazzling views enjoyed. The semicircular arches have greater depth and form barrel vaulted domes in some cases and shading pergolas in others, which give the complex a distinct Mediterranean character and sculptural presence.



A golfers paradise.
Rooftop terraces on a sea of green.





Location: Palmares Resort, Meia Praia (Lagos), Algarve, Portugal

Developer: Onyria Group

Programme: 5-star serviced townhouses

Gross built area: 5,390 sq. m (34 units)

Golf designer :Frank Pennick (18-hole/ Par 71/ 5,961m) and Robert Trent Jones Jr. (additional 9- hole)

Project: 2008 (competition 1st-prize)