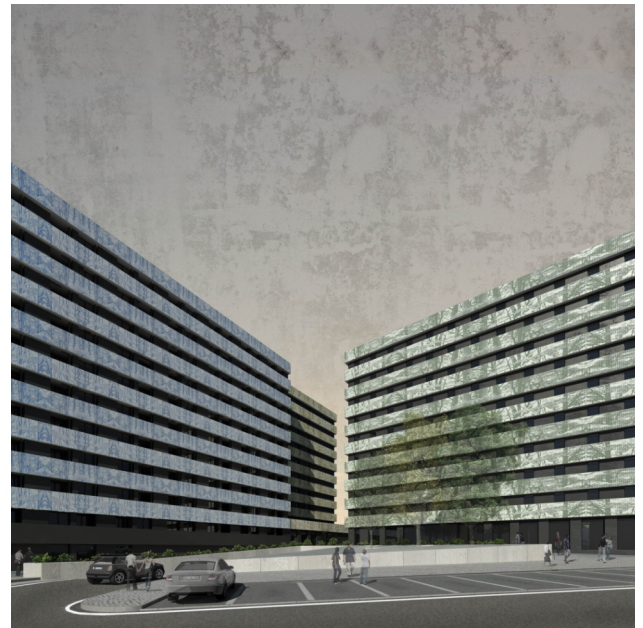


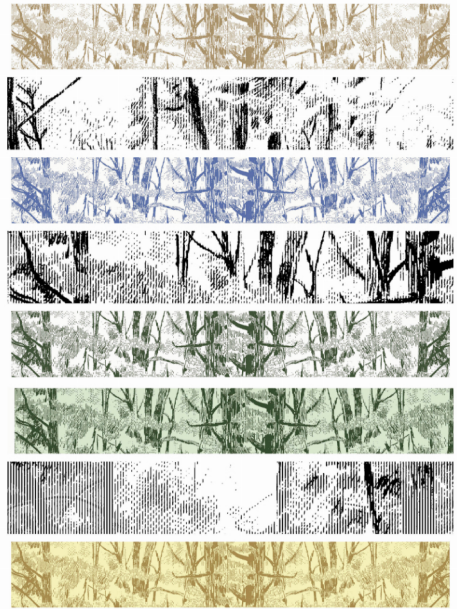
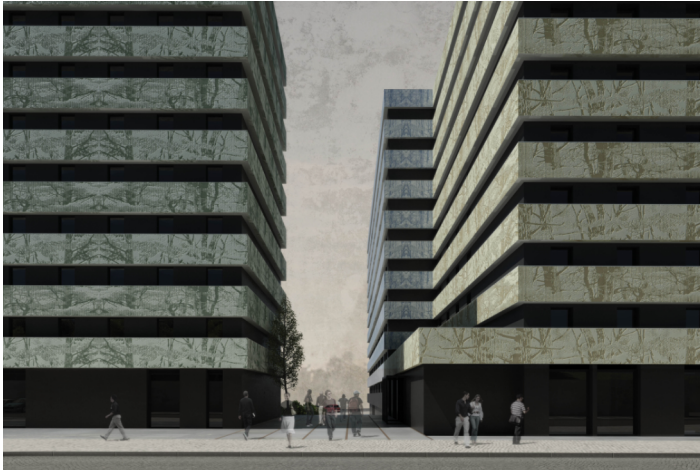
PROMONTORIO

PARQUE NORTESUL HOTEL AND RESIDENCES
BENFICA (LISBON RING ROAD), PORTUGAL
2009

Scheduled to begin construction at the end of 2009, the Parque NorteSul project is a joint venture between Accor and Chamartin to develop a 1-star etap unit and a 2-star ibis unit, with 209 and 264 rooms respectively. In addition, Chamartin will develop 120 studios under the Studio Residence brand.

The complex is highly visible from the Lisbon ring road (2nd Circular), and a façade system was devised to incorporate a public art project based on a system of *bas-relief* precast concrete panels. In collaboration with promontorio, the artist Gabriela Albergaria (b. 1965) created a landscape panorama to provide a stark contrast with the harshness of the surroundings. The artificial representation of nature in photographic imprints is overtly emphasized by the colour of the buildings themselves, which will be green, blue and beige.





Location: Benfica (Lisbon ring road), Portugal
Operator: Groupe Accor
Property: Accor/ Chamartín, SA
Programme: Ibis and Etap units plus studios
Gross built area: 19,600 sq. m (plus 12,000 sq. m underground)
Project: 2009